

alber

Simply mobile.

viamobil®


Push and brake aid



Approved
medical product

"Life's about being
able to go outside and
enjoy life."

**PUSH AND BRAKE
THE EASY WAY.**



**"Out and about, quickly
and easily - not because we
have to, but because
we want to."**

Take mobility for granted again. That's the idea.

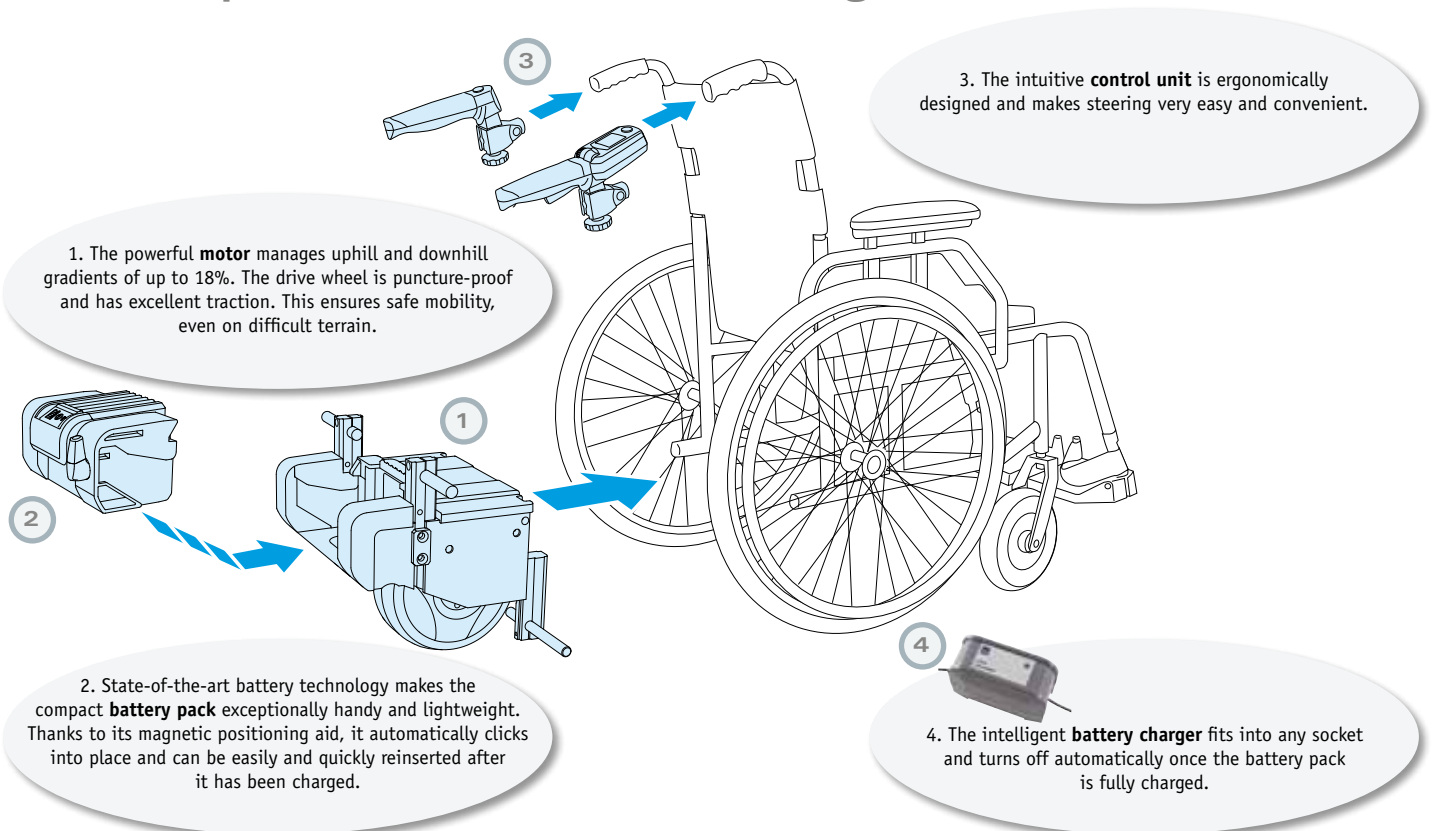
Alber is dedicated to your mobility.

The idea behind viamobil is so simple – and yet so clever: an add-on electric drive is retrofitted to your existing wheelchair. The strong electric motor relieves the carer, thus giving your mobility new drive.

viamobil makes pushing as well as braking child's play. The physical effort previously needed on uphill or downhill gradients and on ramps is now definitely a thing of the past. Enjoy more independence in your everyday life whenever and, especially, wherever you wish.

viamobil can be combined with almost any wheelchair model. Simply select the wheelchair to suit your therapeutic needs and fit it with viamobil. It is quick and simple to mount without the need for tools or technical skills. The wheelchair's functions (e.g. foldability) all remain fully operational, and you benefit from far better comfort and mobility.

The components of viamobil at a glance:



You've always led an active life. So why change that?

We keep you moving. Whatever the incline or surface.

Once attached to the wheelchair, viamobil gives you all-round, flexible mobility:

- ▶ Uphill and downhill slopes of up to 18% can be managed without any strain on the carer.
- ▶ The compact battery pack allows for an operating range of up to 20 km!
- ▶ The motor powers the wheelchair and brakes it as well. This increases safety, even on steep downward slopes.
- ▶ viamobil fits on nearly all wheelchairs with a seat width of 36 cm or more – from standard to recliner wheelchairs.

Thanks to the centrally located drive wheel, the wheelchair is perfectly easy to steer. Even when going downhill, viamobil provides extra safety: the motor safely brakes the wheelchair on downward slopes, thus considerably relieving the strain on the carer. The integrated spring system with the wide drive wheel results in excellent traction. viamobil gets you safely and reliably to your destination, even on difficult terrain such as grass or gravel.

**We ensure mobility.
Whatever the situation.**



Safety and comfort even on downward slopes.



Mastering uphill inclines without any difficulty.





“When our grandchildren see something for the first time, we want to be there to share the moment.”

Safe, mobile, simple. Intuitive steering technology from Alber.

Intuitive steering technology ensures viamobil is easy and convenient to handle and enables carers to cover longer distances without any effort. The ergonomic, non-slip handle provides additional safety, and its symmetric design makes it suitable for left-handed as well as right-handed people[NM7]. So your trip out together is a pleasure and not a challenge.

- 1 **On/Off switch:** added convenience. When the unit is turned on, the drive wheel is lowered automatically.
- 2 **Preselected speed:** adapt the speed to yourself and not yourself to the speed.
- 3 **Battery indicator:** greater assurance. The display shows you how long you can travel.
- 4 **Direction indicator:** Use the switch to select the direction you require and check it on the display.
The ultimate in convenience.
- 5 **Driving lever:** when the driving lever is pressed, you are ready to go.
When it is released, viamobil brakes gently and safely.



We're dedicated to convenience. Because it's the key to mobility.

The hallmark of true quality?
Every detail is just right.



viamobil is particularly distinguished by its fast and easy handling. The new magnet connection system **EasyConnex**, for instance, means no more fiddling about: it virtually connects itself. A magnetic positioning aid automatically pulls the plug into the right position. Just like the **battery pack**, which always slips into the right position on the wheelchair as well thanks to the magnetic guide.



The new **lithium-ion battery** is exceptionally light and small. Weighing just 2.3 kg, it is easy to transport and fully charged with the automatic battery charger in just five hours, giving your viamobil a range of up to 20 km again. A particularly long service life and a 24-month guarantee round off the reliability of the mobile energy supply.

Simple, safe, fast. Here's how it works:



Simply place into the brackets previously mounted on the wheelchair.



Insert the battery pack effortlessly. It's simple and safe.



Plug the control unit into the battery pack and off you go!



If you have any questions or would like a free, no obligation demonstration, call us on 0049 7432 2006-0

Simple, practical, convenient – our mobility solutions:

viamobil lässt sich einfach und komfortabel auch in kleineren Autos transportieren. Die einzelnen Module sind leicht und robust und verfügen über praktische Tragegriffe, mit denen man sie schnell verladen kann. Ohne Werkzeug oder handwerkliche Kenntnisse können Sie viamobil abnehmen, mit dem Rollstuhl platzsparend verstauen und dann mit wenigen Handgriffen wieder betriebsbereit machen. So sind Sie in der Lage, einfacher und schneller mobil zu sein.



viamobil – small, light, handy and easy to transport



Nice, when there's no need to worry! Our unique 48-hour mobility service gets you mobile again within a short space of time after any malfunction.

Safety – wherever you go.

Safety is our top priority. Which is why our products are constantly inspected by various institutions. By TÜV, for instance, the German Technical Control group which certifies product safety in accordance with the guidelines for medical products. Made in Germany by the market leader for add-on drive systems.



viamobil at a glance.

Common questions and answers.

“Will viamobil also fit on my wheelchair?”

viamobil fits on most standard wheelchair models. A bracket is attached to the wheelchair frame into which the viamobil is inserted.

“How do I steer the viamobil?”

Thanks to the central drive wheel, which is perfectly aligned to the wheelchair's centre of gravity, the wheelchair can be as easily steered and manoeuvred as a strictly manual wheelchair. Changes of direction are initiated via the push handles – the electric drive will take care of the rest.

“How fast does viamobil go?”

The maximum speed can be preselected to any increment between 1 and 5.5 km/h. Every attendant can set the speed that suits him or her best.

“How does viamobil brake?”

Like a speed controller, viamobil maintains the preselected speed even when going downhill, so no additional braking is required. When the driving lever is released, viamobil slows down in a controlled manner until it comes to a complete stop. When standing, viamobil also protects the wheelchair safely and reliably from unintentionally rolling away – even on inclines of up to 18%.

“How far do I get with one charge of the battery?”

Depending on the weight of the user, the terrain and the ground surface, viamobil travels up to 20 km with one charge of the battery.

“What is the maximum slope of an incline or ramp that I can manage with my viamobil?”

viamobil can handle uphill and downhill slopes of up to 18%. For safety reasons, however, anti-tippers on the wheelchair are compulsory for gradients exceeding 8%.

“What is the maximum permissible weight of the person in the wheelchair equipped with viamobil?”

viamobil is designed for a maximum user weight of 160 kg.

“Can viamobil also be transported in a car?”

Thanks to quick-release connections and handy components, removing viamobil from the wheelchair, stowing it in the boot and getting it ready to go again at the destination is easy and requires no tools or technical skills.

“How much does viamobil weigh?”

Drive unit: 10.3 kg

Battery: 2.3 kg

Control unit: 0.9 kg

viamobil is an approved medical device.

viamobil conforms to EC Directive 93/42/EC concerning medical devices. Our claim to quality is your guarantee of safety! Certified to the latest standards set out in ISO 9001:2000 and ISO 13485:2003 for medical devices.

Weight information viamobil

Max. user weight: 160 kg*

Max. total weight: 210 kg*
(incl. viamobil, wheelchair and wheelchair user)

* Weights may vary depending on the wheelchair and the suitability of the person operating the device.



Ulrich Alber GmbH

Vor dem Weißen Stein 21

72461 Albstadt

Germany

Phone +49 (0)7432 2006-0

Fax +49 (0)7432 2006-298

info@alber.de

www.alber.de

**“We tried it and
were instantly won
over!”**

with compliments:

www.alber.de