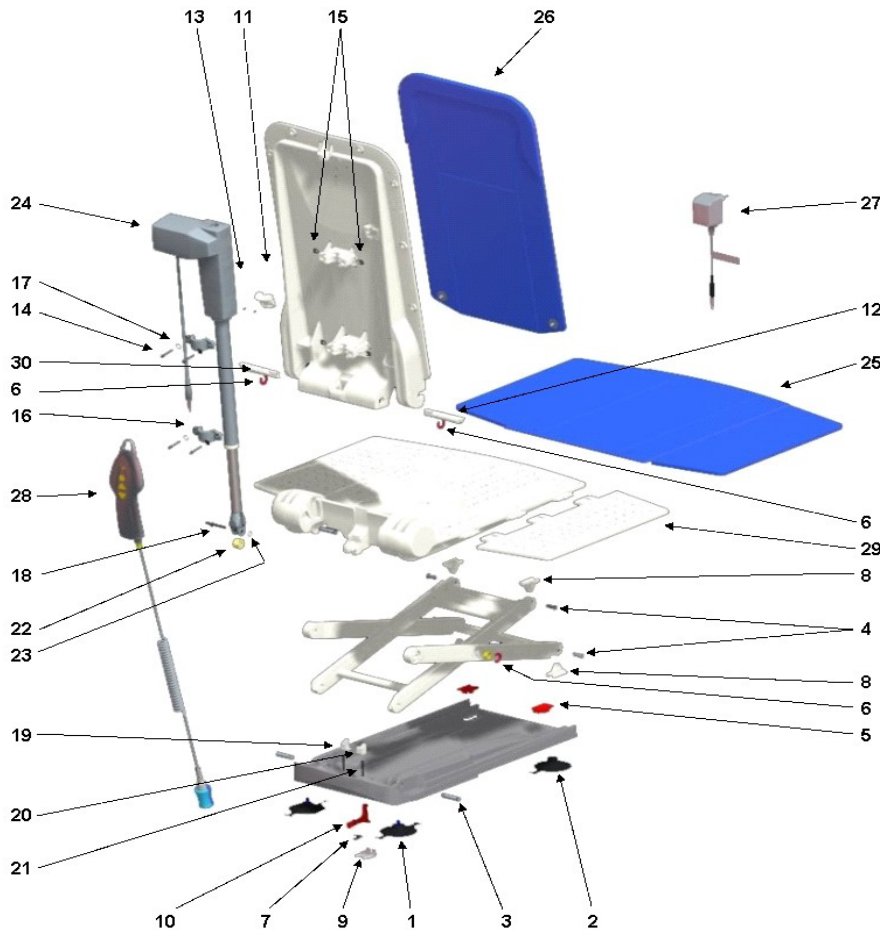


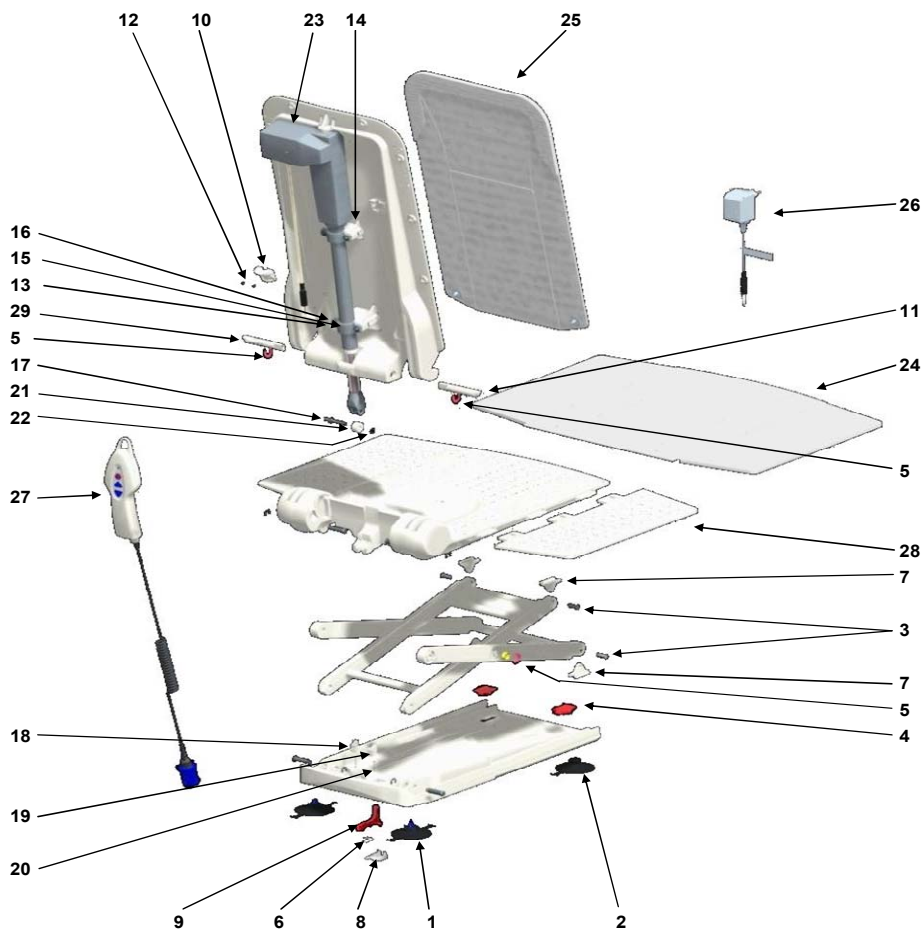
| No. | Item  | Art.-Nr. |
|-----|---|----------|
| 1   | Suction cups with thread, 2 tags (pair)   | 15071    |
| 2   | Suction cups with toggle, 1 tag (pair)  | 15072    |
| 3   | Bolt, $\varnothing$ 10 mm   | 16679    |
| 4   | Bolt for gliding shoe   | 15105    |
| 5   | Suction cup lid   | 15121    |
| 6   | Thrust washer for scissors  | 15344    |
| 7   | Flat spring   | 15415    |
| 8   | Gliding shoe  | 16446    |
| 9   | Bushing latch   | 16448    |
| 10  | Latch   | 16449    |
| 11  | Holding device (excluding screws)   | 16455    |
| 12  | Bolt, right   | 1470579  |
| 13  | Phone jack screws , 40x22   | 15348    |
| 14  | Lens head screw DIN 7985, M5 x 30   | 16781    |
| 15  | Nut for actuator fastening  | 16779    |
| 16  | Pipe clamp for actuator fastening   | 16778    |
| 17  | Washer A2 DIN 9021  | 16780    |
| 18  | Axle  | 16793    |
| 19  | Locking left  | 16791    |
| 20  | Locking right   | 16792    |
| 21  | Pressure spring for locking   | 16794    |
| 22  | Pulley  | 16450    |
| 23  | Retaining ring A2   | 16456    |
| 24  | Orca R Actuator   | 16782    |
| 25  | Cover seat, white   | 16606    |
| 26  | Cover backrest, white   | 16604    |
| 27  | Battery charger   | 16580    |
| 28  | Hand control, complete  | 1470902  |
| 29  | Sideflap with filmhinges  | 15892    |
| 30  | Bolt, left  | 1470580  |
|     | Cover set seat and backrest, white  | 1470576  |
|     | Cover seat, blue  | 1470765  |
|     | Cover backrest, blue  | 1470766  |
|     | Cover set seat and backrest, blue   | 1470767  |
|     | Suction cup set, $\varnothing$ 8 cm (pair with toggle, 1 tag/ pair with thread, 2 tags) | 15353    |
|     | User manual   | 16451    |



**Spare part list Aquatec XL**

**Feb 08**

| No. | Item  | Art.-Nr.       |
|-----|---|----------------|
| 1   | Suction cups with thread, 2 tags (pair)                                     | 15071          |
| 2   | Suction cups with toggle, 1 tag (pair)                                      | 15072          |
| 3   | Bolt for gliding shoe   | 15105          |
| 4   | Suction cup lid   | 15121          |
| 5   | Thrust washer for scissors  | 15344          |
| 6   | Flat spring   | 15415          |
| 7   | Gliding shoe  | 16446          |
| 8   | Bushing latch   | 16448          |
| 9   | Latch   | 16449          |
| 10  | Holding device (excluding screws)   | 16455          |
| 11  | Bolt right  | 1470579        |
| 12  | Phone jack screws , 40x22   | 15348          |
| 13  | Lens head screw DIN 7985, M5 x 30   | 16781          |
| 14  | Nut for actuator fastening  | 16779          |
| 15  | Pipe clamp for actuator fastening   | 16778          |
| 16  | Washer A2 DIN 9021  | 16780          |
| 17  | Axle  | 16793          |
| 18  | Locking left  | 16791          |
| 19  | Locking right   | 16792          |
| 20  | Pressure spring for locking   | 16794          |
| 21  | Pulley  | 16450          |
| 22  | Retaining ring A2   | 16456          |
| 23  | <b>Actuator XL</b>  | <b>1471062</b> |
| 24  | Cover seat, white   | 16606          |
| 25  | Cover backrest, white   | 16604          |
| 26  | Battery charger   | 16580          |
| 27  | Hand control complete   | 1470902        |
| 28  | Sideflap with filmhinges  | 15892          |
| 29  | Bolt, left  | 1470580        |
|     | Cover set seat and backrest, white  | 1470576        |
|     | Suction cup set, ø 8 cm (pair with toggle, 1 tag/ pair with thread, 2 tags) | 15353          |
|     | Cover seat, blue  | 1470765        |
|     | Cover backrest, blue  | 1470766        |
|     | Cover set seat and backrest, blue   | 1470767        |
|     | User manual   | 16451          |



## Spare part list Aquatec F

Feb 08

| No.       | Item  | Art.-Nr.       |
|-----------|---|----------------|
| 1         | Suction cups with thread, 2 tags (pair)   | 15071          |
| 2         | Suction cups with toggle, 1 tag (pair)  | 15072          |
| 3         | Bolt, $\varnothing$ 10 mm   | 16679          |
| 4         | Bolt for gliding shoe   | 15105          |
| 5         | Suction cup lid   | 15121          |
| 6         | Thrust washer for scissors  | 15344          |
| 7         | Flat spring   | 15415          |
| 8         | Gliding shoe  | 16446          |
| 9         | Bushing latch   | 16448          |
| 10        | Latch   | 16449          |
| 11        | Holding device (excluding screws)   | 16455          |
| 12        | Phone jack screws, 40x22  | 15348          |
| 13        | Lens head screw DIN 7985, M5 x 30   | 16781          |
| 14        | Nut for actuator fastening  | 16779          |
| 15        | Pipe clamp for actuator fastening   | 16778          |
| 16        | Washer A2 DIN 9021  | 16780          |
| 17        | Axle  | 16793          |
| 18        | Retaining ring A2   | 16456          |
| <b>19</b> | <b>Actuator F</b>   | <b>1471060</b> |
| 20        | Cover seat, white   | 16606          |
| 21        | Cover backrest, white   | 16604          |
| 22        | Battery charger   | 16580          |
| 23        | Hand control, complete  | 1470902        |
| 24        | Sideflap with filmhinges  | 15892          |
|           | Cover set seat and backrest, white  | 1470576        |
|           | Suction cup set, $\varnothing$ 8 cm (pair with toggle, 1 tag/ pair with thread, 2 tags) | 15353          |
|           | Cover seat, blue  | 1470765        |
|           | Cover backrest, blue  | 1470766        |
|           | Cover set seat and backrest, blue   | 1470767        |
|           | User manual   | 16451          |

