

CLIENT CONFIDENTIAL

Client Invacare Deutschland GmbH

Test Item Kite

Test ISO 7176-19 Wheelchair Test

Millbrook Report No. 11/0497

Millbrook Project No. CR0141-006-01

Millbrook Test No. S11713

Author:



O. King
Engineer

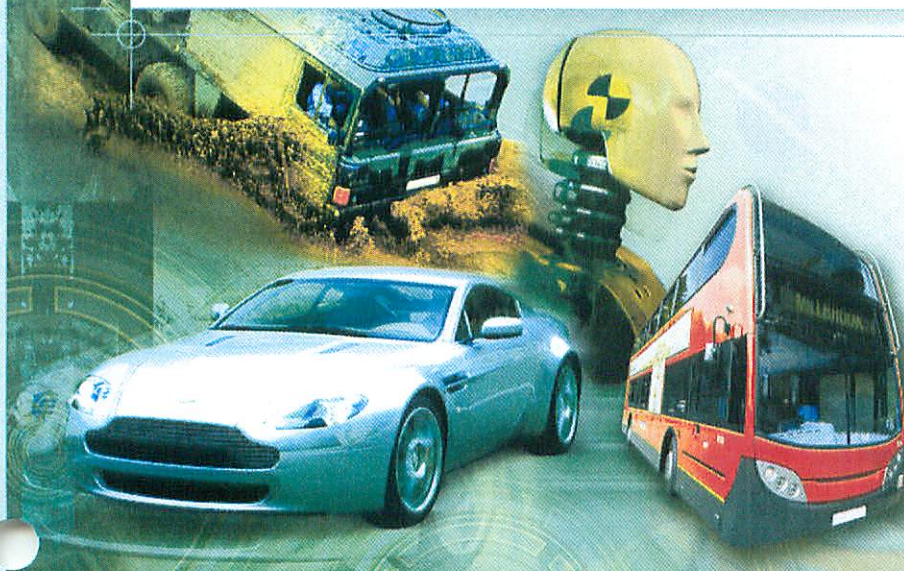
Approved:



K. Forinton
Engineer

Date:

20th July 2011



Millbrook Proving Ground Ltd
Millbrook, Bedford, MK45 2JQ, UK
Tel: +44 (0)1525 404242
Fax: +44 (0)1525 403420
Email: info@millbrook.co.uk
www.millbrook.co.uk

Test Results

ISO/NP 7176/19

5th July 2011

Section 5.2 - Dynamic Performance Requirements

Test No: S11713	RESULTS
Client: Invacare Deutschland GmbH	
Wheelchair: Kite	
Occupant: 50 th ile (75 kg)	
5.2.1 During the Test	
a) Horizontal ATD and wheelchair excursion limits as per limits shown in Table 3:-	
Was the horizontal movement of the test wheelchair P- Point (X_{wc}) less than 200 mm (± 5 mm)	PASS 200 mm
Was the horizontal movement of the dummy knee (X_{knee}) less than 375 mm (± 5 mm)	PASS 309 mm
Was the horizontal movement of the dummy head (X_{head}) less than 650 mm (± 5 mm)	PASS 304 mm
b) Was the ratio $X_{knee} / X_{wc} > 1.1:1$	PASS 1.55 : 1
c) Was the rear horizontal movement of the dummy head (X_{headR}) less than -450 mm (± 5 mm)	PASS -410 mm
Did the batteries of powered wheelchairs, or their surrogate parts:-	
i) move outside of the wheelchair footprint	PASS
ii) move into the wheelchair user's space	PASS
5.2.1 Post Test	
a) Did the wheelchair remain upright on the test platform Did the ATD remain in a seated posture in the test wheelchair with a torso angle less than 45°	PASS
b) Did the wheelchair securement points show visible signs of material failure	PASS
c) Did any components of a mass greater than 100g become detached from the wheelchair	PASS
d) Did any occupant contactable components fragment or separate with an edge of less than 2mm	PASS
e) Did any primary load carrying components of the wheelchair show any visible signs of failure	PASS
f) Did any 'tilt in space' locking mechanisms show signs of failure	PASS
g) Was the ATD released from the wheelchair without the use of tools	PASS
h) Was the wheelchair released from the restraint system without the use of tools	PASS
i) Was the average decrease of H-Point height relative to the wheelchair platform less than 20% of the pre-test height.	PASS
Has the wheelchair satisfied the Dynamic Test requirements of ISO/FDIS 7176/19 of 7th July 2008	PASS