

Invacare® *Modulite*™

Individual fit and adaptability

NEW

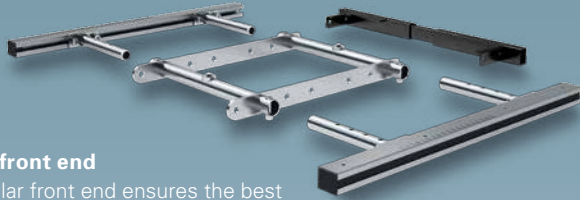


Yes, you can.®



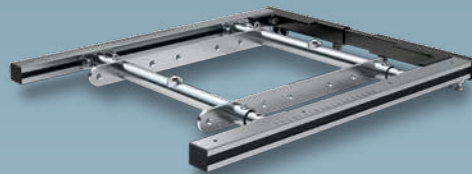
Maximum flexibility for adapting to personal needs

The telescopic seat frame is an ingenious technology at the heart of the Modulite™ seat. Its design supports a number of positioning options to fully suit a client's needs. Consequently, a dealer or even a therapist can easily make many adaptations needed for optimal positioning.



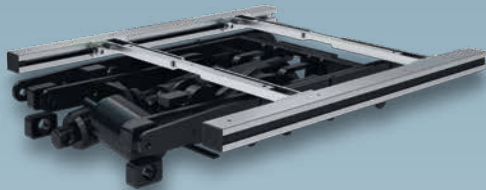
Modular front end

The modular front end ensures the best possible settings for side or centre-mounted legs.



Side rails

On each side of the seat sits a rail system mounted to telescopic bars, which can be adjusted in width from 380 mm to 530 mm. Side rails also allow for the individual placement of the armrests and the mounting of accessories, including knee supports.

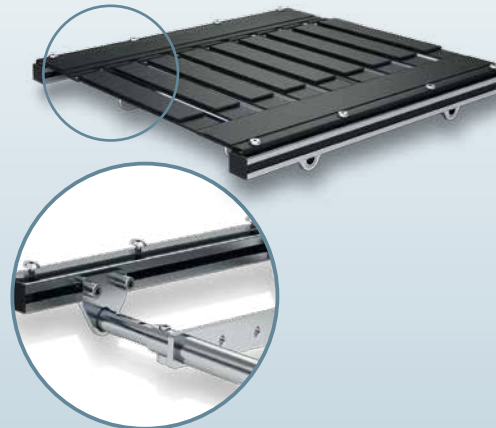


Telescopic inner frame

A dedicated version is optimized for mounting on 'tilt' and 'lifter' modules. This guarantees the lowest possible 'seat to floor' height positions.

Choose from a selection cushions

The Modulite™ features a variety of seat supports and cushions, which can be used to gain further comfort and to align posture and positioning.



Sling seat option

The seat surface can easily be shaped to suit a client's posture, providing optimal comfort and support. 30 mm worth of space for each individual setting can be gained with the use of adaptors.



Affordable - and flexible

For clients with less complex requirements, the starting point for this modular system is the popular one-piece seat plate, together with integrated arm and leg rest receivers. Although much simpler in terms of configuration, this model still offers exceptional flexibility, and can be combined with a number of options available with the telescopic base.



of seat supports and

Reclining options and postural support



Seat plate settings for width and depth

This 3-piece seat plate covers all possible width and depth settings.



Matrix® Flo-tech® seat cushions

In line with individual requirements and preferences, there also exists an additional choice from the highly regarded **Matrix® Flo-tech®** range of optimal position and pressure-reducing cushions.

The Modulite™ guarantees great flexibility when it comes to postural support options. Tubular backposts, which can be width-adjusted, allow for the mounting of multiple back supports. The recline movement itself is both natural and smooth, thanks to the high pivot that actually minimizes shearing forces.



Single back posts

Cast backpost receivers incorporate manual settings and slide onto the rail system to allow significant adjustments in the depth of the seat.



Powered recline option

The powered recliner also consists of a high pivot point for a natural movement. However, it requires that the lower support bar to be mounted on the actuator, and this can be retro-fitted. The actuator has a quick release mechanism, so that it can easily be folded away for transporting.



Tension adjustable upholstery

The upholstery can be adjusted to accommodate different body shapes.



Invacare® Matrix® backs

This attractive range of backs is available in lightweight designs. The different types of backs offer optimal postural support and positioning.



Rea® Flex3 backrest

The **Flex3** backrest plates can be adjusted to suit different heights and widths. The width settings correspond to the settings of the telescopic seat frame.

Features and Accessories



Side-ways adjustable legrests



Side-ways adjustable armrests



Headrest



Laterals

Technical data



380 mm, 430 mm¹,
480 mm,
530 mm²



infinite,
factory settings
410, 460, 510 mm



480 mm,
540 mm,
560 mm³



270 mm to
390 mm



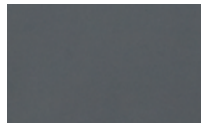
90° to 120°

- 1/ Fixed seat plate
- 2/ Each seat width additional 50 mm by armrest adjustment
- 3/ **Flex3** plates, settable in different heights movable by 100 mm

Upholstery



LK cover
(Mixed fabrics)



Dartex®



Matrix cover
(Mesh)



Tension adjustable
cover
(Mixed fabrics)



Plush

(available colours and types depending on cushion choice)

Wheelchair models



Invacare® **Spectra®** XTR 2



Invacare® **Kite®**

Invacare Limited
Pencoed Technology Park - Pencoed -
Bridgend CF35 5AQ - United Kingdom
Tel: +44 1 656 776 222
Fax: +44 1656 776 220
E-mail: uk@invacare.com
Sales Order E-mail:
ordersuk@invacare.com
www.invacare.co.uk

Invacare Ireland Ltd
Unit 5 - Seatown Business Campus
Seatown Road - SWORDS - County
Dublin - Ireland
Tel. +353 1 8107084
Fax +353 1 8107085
Email: Ireland@invacare.com
www.invacare.ie

© 2013 Invacare International Sàrl
All rights reserved.
DARTEX is a registered trademark of
Dartex Coatings Ltd.

All information quoted is believed to be
correct at time of print.
Invacare reserves the right to alter product
specifications without prior consultation.

Modulite - UK - 06/2013