

WendyDrive2

Electric assisted patient hoist



Advancing healthcare

Protecting caregivers. Improving transfers.



Advancing healthcare

Healthcare professionals do their very best every day to ensure their patients' wellbeing. It is a physically demanding job. DHCare helps healthcare professionals work in a safe environment. Physical strain is a common problem among healthcare professionals. Performing physical activities on a daily basis year after year is demanding, and can lead to absenteeism in the workplace due to physical ailments.



Physical ailments



Top 5 risks



Back problems



Sick-leave

85% of healthcare workers have **physical ailments**.¹

Pushing and pulling is one of the top five risk factors that can lead to **physical strain**.

60 - 70% of healthcare workers have **back problems**.²

33% of sick-leave is related to **physical strain**.³

We help healthcare workers operate in a safe, healthy environment and contribute to an improved balance between work and health.



Research
1/ Fifth Monitoring of Physical Strain in Healthcare Facilities, Home Care and Postnatal Care 2015, commissioned by A+O VVT, a fund for the healthcare labor market and education policy.
2/ Working package on reducing physical strain, Healthcare and Wellbeing Sector Funds, Utrecht.
3/ Healthy and safe working conditions in the Healthcare and Welfare sector, sector report 2013-2015, Inspection Dept., Ministry of Healthcare and Welfare.

Feel safe and more connected with WendyDrive2

The ergonomic patient hoist with electric assisted drive

The WendyDrive2 is a passive patient hoist with a rotating arm and adjustable spreader bar, making it easier for healthcare workers to position the patient at the back of the chair.

The spreader bar has an adjustable suspension system that automatically adjusts to the patient's center of gravity. This ensures maximum comfort during transfers.



1

Correct position

The long rotating arm and the adjustable spreader bar ensure a comfortable and safe transfer.

2

Effortless transfer

With its patented assisted drive, the WendyDrive2 can be moved in any direction with minimal effort.

3

Preventing physical strain

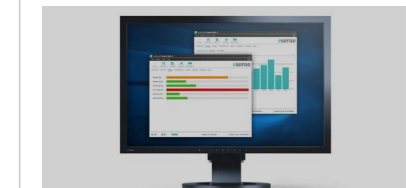
In addition, the esense WendyDrive2 hoist has Ergofeedback to warn users when too much force is being applied to move the hoist.



Ergonomic functions



Ergo-feedback



Insight into data (PowerTalk)

Accessories



Stay holder



Sling with safe IQ clips

Technical data ▼



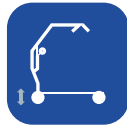
Maximum lift capacity ▼

230 kg



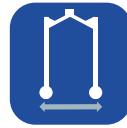
Length of frame ▼

134.2 cm



Height of chassis ▼

11.5 cm



Max. external width - legs closed ▼

71.9 cm



Max. internal width - legs spread ▼

123 cm



Vertical lift ▼

131.5 cm



Horizontal range (arm) ▼

95.3 cm



Turning radius ▼

149.2 cm



Charging time ▼

3-4 hrs.



Battery type ▼

Li-ion



Battery voltage and capacity ▼

24V 2.85 Ah



Average number of transfers with full battery ▼

69 with average weight 80 kg
41 with average weight 230 kg



Water resistance ▼

IPX4