

POWER SERIES

TDX[®] SP2 Modulite



Highly responsive mid wheel drive power chair
with versatile Modulite seating



| TDX® SP2 Modulite

Optimal comfort and performance.

The TDX® SP2 Modulite is one of our highest performing mid wheel drive power chairs.

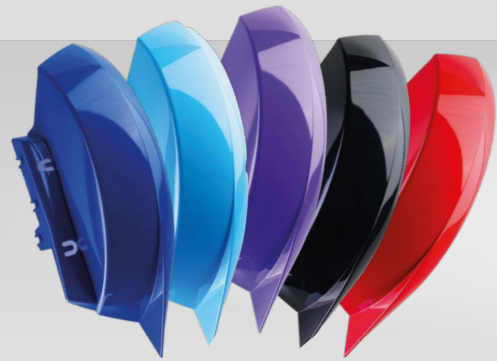
Quality and technology at its core, combined with our highly adaptable Modulite seating and advanced LiNX® controls to give optimal comfort and performance every time.



| TDX® SP2 Modulite

It's more than a base.

The TDX® SP2 is built to perform and effortlessly take you where you want to go. Easy to control and manoeuvre to help give you more freedom and independence in any environment.



New shroud collection

Choose from a selection of exciting new colour shrouds for a stylish look.



Width **650 mm**



560 mm turning radius



Excellent manoeuvrability

The mid wheel drive makes navigation through tight spaces easier and gives you more controlled movement.



Patented SureStep® suspension

Provides a smooth and comfortable ride even over challenging surfaces.



Enhanced stability & safety

Designed to ensure all six wheels remain firmly on the ground with the integrated stability lock function.

| TDX® SP2 Modulite

New colours. Extra durability.

Add a fresh and stylish touch with a new shroud colour. The shroud's extra durability helps protect and withstand everyday challenges.



Obsidian Black

Ruby Red

Purple Passion

Peacock Blue

Arctic Blue

| TDX® SP2 Modulite

Extensive positioning options.

Our versatile Modulite seating system gives a personalised position for extra comfort and support.

Ranging from more basic seating requirements through to more complex postural needs, the modular design maximises positioning possibilities.



Complete solutions

Extensive range of seating options including backrests, seat cushions, armrests, headrests and many others.



Designed for safety & comfort

50° tilt, 300mm seat rise with 45° tilt bring comfort and security.



LNX legrest

Extends in both length and elevation, working with powered recline to help reduce shear.



Award-winning Matrix

Personalised Matrix seating options to ensure an optimum fit every time.

Range of tilt options

Provide pressure management and maximised comfort.



300 mm of seat rise combined with up to 45° tilt positioning

| TDX® SP2 Modulite

Modulite seating. Modular versatility.

Our most popular seating solution.
A modular approach to seating that maximises possibilities. Adjusts with ease for the perfect fit and optimised high levels of comfort.

Tech spec

Seat width: 330 - 580 mm

Seat depth: 410 - 560 mm

Seat height: from 450 mm

Armrest height: 230 - 365 mm

Footrest length: 280 - 460 mm



Adjustable seating for a perfect fit



| TDX® SP2 Modulite

Featuring advanced **LiNX**® technology.

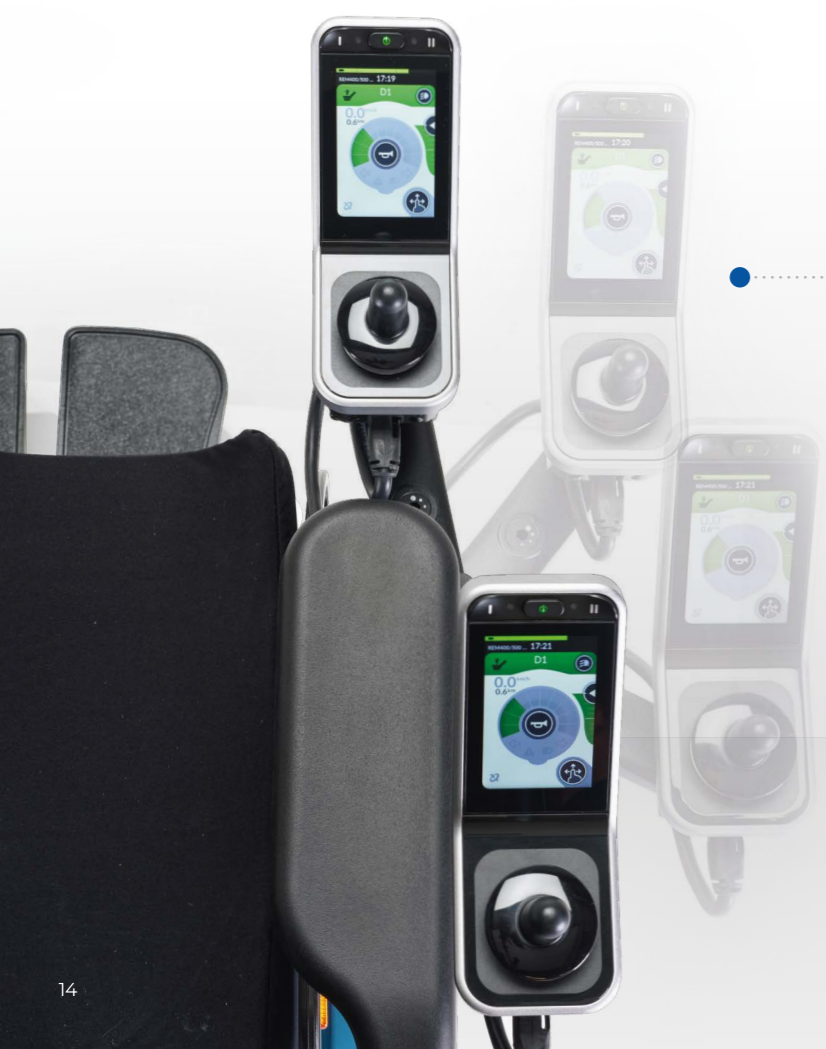
LiNX® technology helps give a personalised and confident drive experience. The innovative technology learns habits and preferences over time making it a super intuitive system.



| TDX® SP2 Modulite

LINX®

Discover more.



New Resolve joystick mount

- Huge range of achievable joystick positions for optimised comfort.
- Adjustable tension release.
- Optimised comfort and control.



3.5" Touchscreen

Impressive 3.5" colour touchscreen with joystick, speedometer and an odometer.



Specialist controls

Including compact remotes, head arrays and four-switch proximity arrays.



Built-in Bluetooth®

Enables connectivity to devices and environmental controls.



Control input options

A variety of control input options allow a personalised set up for maximum control and reassurance that the power chair will react consistently.

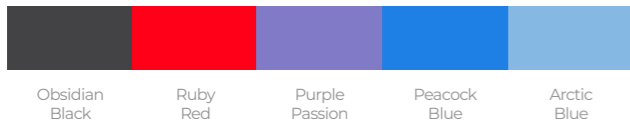


| TDX® SP2 Modulite

Technical data.

Further information about this product, including the user manual, please visit our website www.invacare.eu.com.

New colours



	Seat width	Seat depth	Seat height	Backrest height	Armrest height	Footrests	Seat angle
1-piece seat plate ▶	430 mm	410 - 510 mm	450 - 475 mm	480, 540 mm	275 - 390 mm	290 - 460 mm	0° - 8°
Telescopic seat ▶	330 - 530 mm	410 - 560 mm	450 - 475 mm	480, 540, 560 - 610 mm	230 - 365 mm	280 - 460 mm	0° - 50°
Max seat ▶	490 - 610 mm	560 - 630 mm	470 - 495 mm	570 - 680 mm	250 - 340 mm	290 - 510 mm	0° - 20°

	Backrest angle	Total height	Total length inc. footrests	Total length without footrests	Driving unit width	Max. user weight	Battery capacity
1-piece seat plate ▶	90° - 120°	1010 - 1170 mm	1160 mm	980 mm	650 mm	180 kg	73.5 Ah
Telescopic seat ▶	90° - 120°	1010 - 1170 mm	1160 mm	980 mm	650 mm	180 kg	73.5 Ah
Max seat ▶	90° - 115°	1100 - 1125 mm	1240 mm	970 mm	650 mm	180 kg	73.5 Ah

	Turning diameter	Max. climbable obstacle height	Max. safe slope	Speed	Driving range	Total weight
1-piece seat plate ▶	1120 mm	75 mm	9° / 15.8%	up to 12 km/h	up to 41 km	138 kg
Telescopic seat ▶	1120 mm	75 mm	9° / 15.8%	up to 12 km/h	up to 41 km	183 kg
Max seat ▶	1120 mm	75 mm	9° / 15.8%	up to 6 km/h	up to 41 km	164 kg

| TDX® SP2 Modulte

Share your thoughts and help shape the future of power chairs.

We invite you to **share your feedback**. Your insights will help us better serve the power chair community.

Please scan and complete the form.



Thank you for letting us join your journey.

Invacare Power Series Team



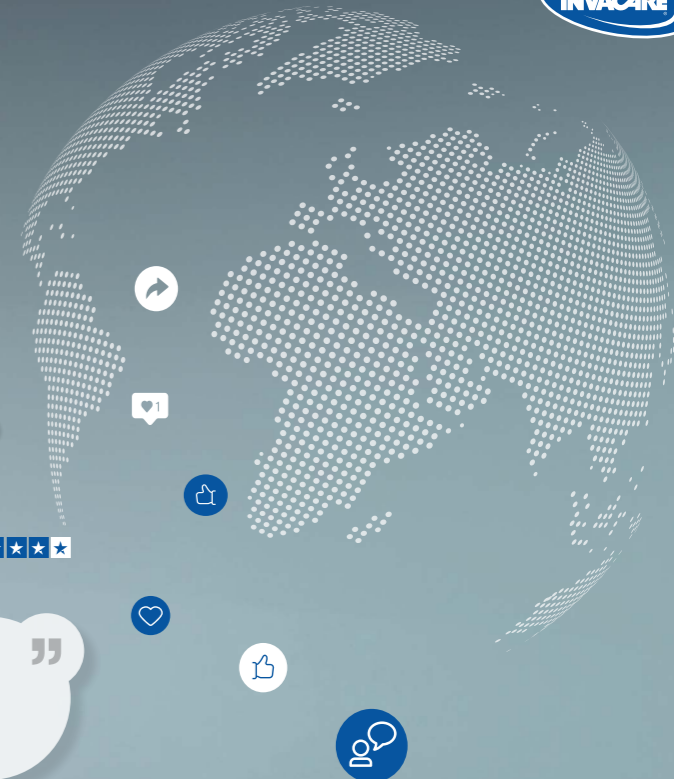
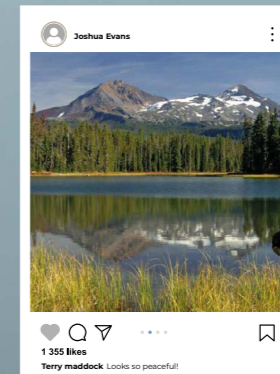
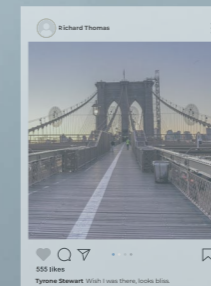
Share your feedback.

SUBSCRIBE



My chair allows me to live an independent life and get outdoors everyday.

Ian Mackay
Invacare Ambassador



POWER SERIES

TDX SP2

AVIVA RX

AVIVA FX

Esprit Action

Kompas

Storm 4

Tel: +41 61 487 70 70

hqeuropa@invacare.com

www.invacare.eu.com

© 2024 Invacare International GmbH. All rights reserved.
All information quoted is believed to be correct at time of print.
Invacare reserves the right to alter product specifications without
prior consultation. EU - TDX SP2 NB Modulite - 10/2024

