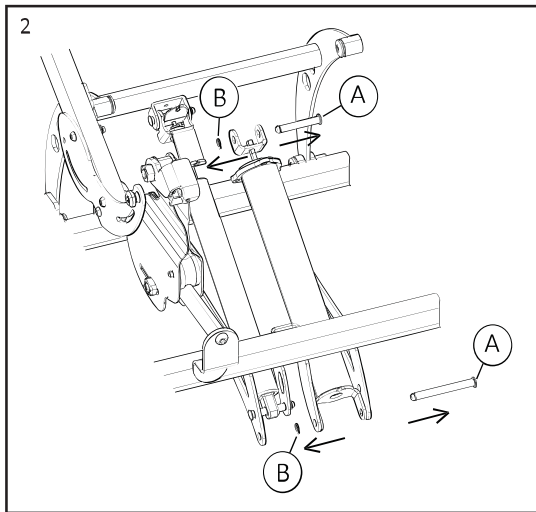
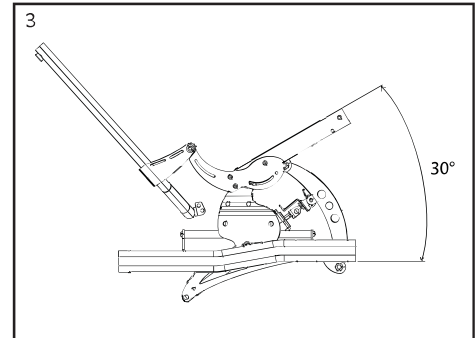


1. Tilt the chair to unloaded position (about 5 - 10°)
2. Remove the two safety pins (A) and locking washer (B) of the spring piston.  
Tooling: Use a nipper



3. Tilt the chair to a seat angle of about 30°

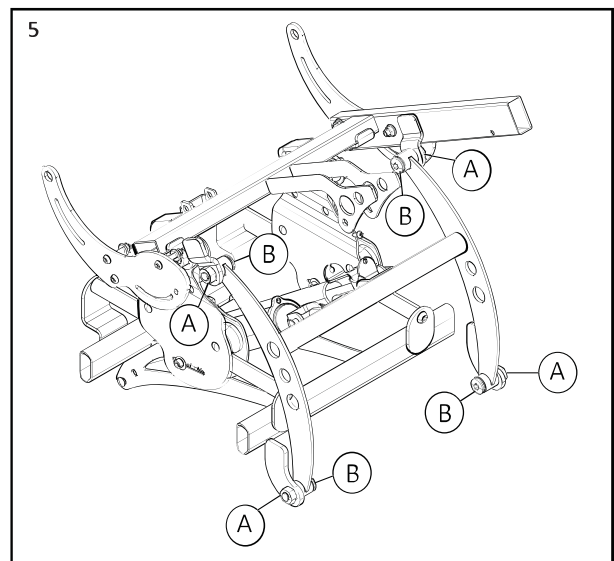
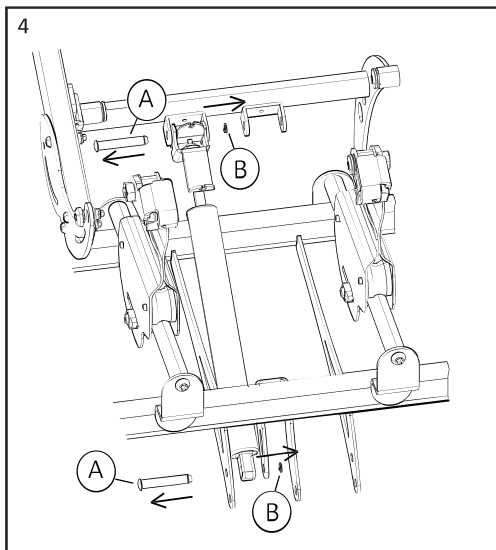


5. Heat the nuts (A) with a hot air gun before untighten the linkarm screws (B). While heating the nut, place a slight counterclockwise torque to the screw (B) and stop warming immediately when the screw starts to turn.

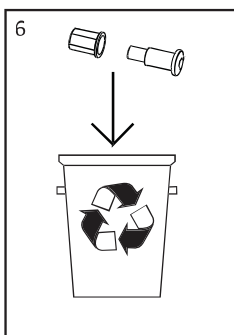
CAUTION! Parts will become hot!

Tooling: Hot air gun and Allen key 6mm.

4. Remove the two safety pins (A) and locking washer (B) of the gas piston. Tooling: Use a nipper



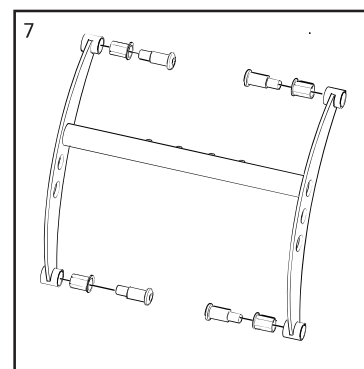
6. Scrap the old plastic bushings and screws.



7. Use new screws and plastic bushings when assembling the new linkarm. Tighten the screws with a torque wrench to 18 Nm.

Tooling: Torque wrench

8. Continue with the electrical power tilt, assembly as shown in the service manual.



Invacare Rea AB  
Växjövägen 303  
SE-343 71 Diö  
Sweden

