

POWER SERIES

# AVIVA RX Modulite



Impressive rear wheel drive power chair  
with highly adaptable and comfortable Modulite seating



| AVIVA RX Modulite

# A confident and comfortable drive.

Design. Technology. Performance.

Explore the **AVIVA RX**. A high performing rear wheel drive power chair, combined with the Modulite seating for maximum comfort in any environment.



| AVIVA RX Modulite

# Design. Technology. Performance.

Take a closer look at the **AVIVA RX** base. The first from the AVIVA line, the AVIVA RX sets a new standard in rear wheel drive chairs. Designed with the latest technical innovations to give a more advanced drive performance.



## CTC suspension (patented)

Designed to absorb vibrations or bumps during travel for optimum comfort and gives increased reassurance of stability with four wheels remaining in contact with floor.



## LiNX G-Trac Gyro

Travelling long distances or at higher speeds has been made even easier with LiNX G-Trac Gyro technology. A gyro module within the electronics ensures the AVIVA RX follows control direction and stays on the right path.



## Compact design

A shorter, narrower wheelbase and low seat height makes the AVIVA RX easy to manoeuvre with precise control in all environments and even easier for use in smaller spaces with a tight turning radius.



## Sleek & stylish

Clean lines, sleek angles and a high-quality finish, sets the AVIVA RX apart when it comes to aesthetics. Modern in design to look as good as it performs and can be customised with a choice of colours.

| AVIVA RX Modulite

# Extensive positioning options.

Our versatile Modulite seating system gives a personalised position for extra comfort and support.

Ranging from more basic seating requirements through to more complex postural needs, the modular design maximises positioning possibilities.



## Complete solutions

Extensive range of seating options including backrests, seat cushions, armrests, headrests and many others.



## Designed for safety & comfort

50° powered tilt, 300 mm seat rise with 45° tilt bring comfort and security.



## LNX legrest

Extends in both length and elevation, working with powered recline to help reduce shear.



## Award-winning Matrix

Personalised Matrix seating options to ensure an optimum fit every time.

## Range of tilt options

Provide pressure management and maximised comfort.



**300 mm of seat rise combined with up to 45° tilt positioning**

| AVIVA RX Modulte

# Modulte seating. Modular versatility.

Our most popular seating solution is designed with you in mind. With a modular approach, our Modulte seating is easily tailored to perfectly fit to give exceptional comfort and support.

## Tech spec

Seat width: 330 - 530 mm

Seat depth: 410 - 510 mm

Seat height: from 435 mm

Armrest height: 230 - 390 mm

Footrest length: 280 - 460 mm



Adjustable  
seating  
for a  
perfect fit



| AVIVA RX Modulite

# Featuring advanced LINX<sup>®</sup> technology.

LINX<sup>®</sup> technology helps give a personalised and confident drive experience. The innovative technology learns habits and preferences over time making it a super intuitive system.



### New Resolve joystick mount

- Exceptional range of achievable joystick positions for optimised comfort
- Adjustable tension release
- Optimised comfort and control



### 3.5" Touchscreen

Impressive 3.5" colour touchscreen with joystick, speedometer and an odometer.



### Specialist controls

Including compact remotes, head arrays and four-switch proximity arrays.



### Built-in Bluetooth<sup>®</sup>

Enables connectivity to devices and environmental controls.



### Control input options

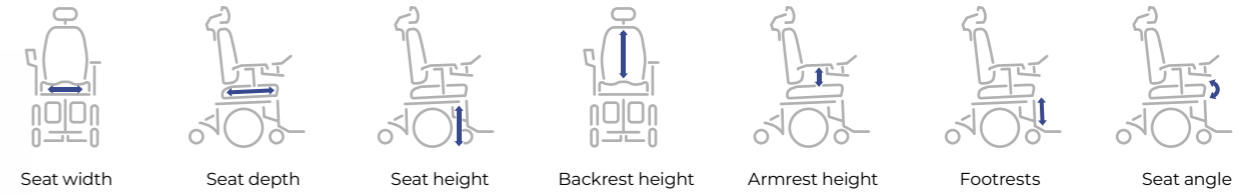
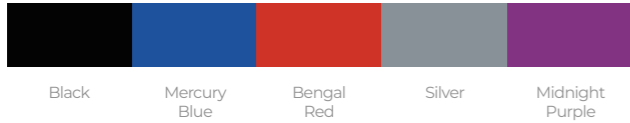
A variety of control input options allow a personalised set up for maximum control and reassurance that the power chair will react consistently.

AVIVA RX Modulite

# Technical data.

Further information about this product, including the user manual, please visit our website [www.invacare.eu.com](http://www.invacare.eu.com).

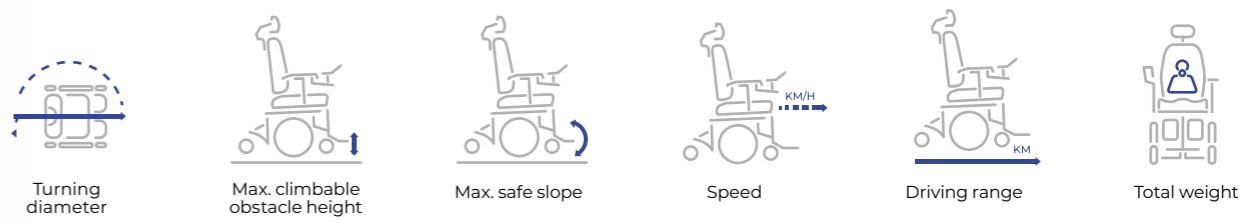
## Colour collection



Seat width	Seat depth	Seat height	Backrest height	Armrest height	Footrests	Seat angle
<b>AVIVA RX 1-piece seat:</b>						
430 - 480 mm	410 - 510 mm	435 - 485 mm	480 mm - 540 mm	275 - 390 mm	290 - 460 mm	0° - 20°
<b>AVIVA RX telescopic seat:</b>						
330 - 530 mm	410 - 510 mm	435 - 485 mm	480, 540, 560 - 610 mm	230 - 360 mm	280 - 460 mm	0° - 50°
<b>AVIVA RX HD:</b>						
620 - 650 mm	510 - 580 mm	435 - 485 mm	540 mm	245 - 360 mm	280 - 460 mm	0° - 30°



Backrest angle	Total height	Total length inc. footrests	Total length without footrests	Driving unit width	Max. user weight	Battery capacity
<b>AVIVA RX 1-piece seat:</b>						
90° - 120°	1000 mm	1026 - 1300 mm	830 mm	560 mm	136 kg	60/73.5 Ah
<b>AVIVA RX telescopic seat:</b>						
90° - 120°	1000 - 1335 mm	1026 - 1300 mm	830 mm	560 mm	136 kg	60/73.5 Ah
<b>AVIVA RX HD:</b>						
90° - 120°	1000 mm	1026 - 1300 mm	830 mm	635 mm	160 kg	60/73.5 Ah



Turning diameter	Max. climbable obstacle height	Max. safe slope	Speed	Driving range	Total weight
1506 - 2086 mm	75 mm (100 mm with kerb climber)	6° / 10.5%	up to 12 km/h	up to 47 km	up to 185.2 kg

| TDX® SP2 Modulte

# Share your thoughts and help shape the future of power chairs.

We invite you to **share your feedback**. Your insights will help us better serve the power chair community.

Please scan and complete the form.



Thank you for letting us join your journey.

**Invacare Power Series Team**



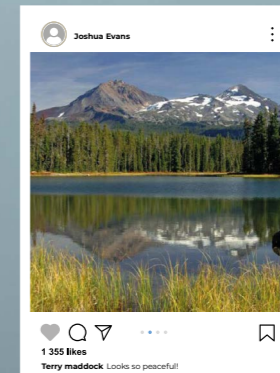
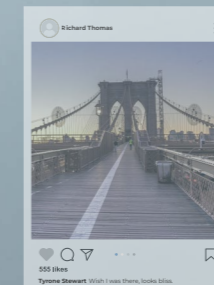
Share your feedback.

SUBSCRIBE



My chair allows me to live an independent life and get outdoors everyday.

**Ian Mackay**  
Invacare Ambassador





P O W E R   S E R I E S

**AVIVA RX**

AVIVA FX

TDX SP2

Esprit Action

Kompas

Storm 4

**Tel: +41 61 487 70 70**

[hqeuropa@invacare.com](mailto:hqeuropa@invacare.com)

[www.invacare.eu.com](http://www.invacare.eu.com)

© 2024 Invacare International GmbH. All rights reserved.  
All information quoted is believed to be correct at time of print.  
Invacare reserves the right to alter product specifications without  
prior consultation. EU - TDX SP2 NB Modulite - 10/2024

