

**matrix**<sup>®</sup>  
SEATING SERIES

# MX2 Backrest



Specially engineered carbon Fiber  
providing unmatched stability for the  
ultimate performance



Yes, you can.

Designed for active users, the **MX2** is an ultra-lightweight backrest with a fresh look and attractive design. A stylish add-on to any lightweight manual wheelchair, the **MX2** offers exceptional support to the lower trunk and pelvis, adding comfort and stability for optimised function – whether it be to self-propel or engage in day to day activities.

With the **MX2**, you have it all – aesthetics, support, comfort and functionality.



#### Lightweight carbon fiber shell

The **MX2** has been specially designed using several layers of carbon fiber to optimise flex and shock absorption. This means that the backrest will have the flexibility to accommodate the users' movements whilst helping to keep them in a midline position; which is exactly what an active user needs – stable freedom of movement. It will also play a major role in vibration dampening, especially when combined with the carbon fixation hardware, which enables users to ride more comfortably.

#### The perfect shape

The **MX2** offers a 76 mm depth of anatomical contouring for enhanced lateral stability and immersion of the trunk. Lateral cutouts for the hips allow increased freedom of movement; ideal when leaning laterally for pressure relief or when reaching to pick up objects. The scapula cutout allows for freedom of movement of the shoulder blade, without compromising on support, allowing the user to self-propel efficiently, even with a higher back.



#### Features and options

##### Back shell

- Available in four heights and five widths allowing everyone to find a perfect match
- Cutouts for breathability to help manage microclimate
- Slotted design to allow height adjustments even when the user is in the chair
- Breathable Spacetex cover – backrests 230 mm or higher come with leatherette side panels
- Oversized foam for enhanced comfort and protection



##### Easy fit hardware

The **MX2** comes available with two types of hardware – Fixed Mount or Quick Release – both allowing for 3D adjustment in:

- Height
- Depth (76 mm with Fixed Hardware; 108 mm with Quick-release Hardware) and Angle (+/- 15° stepless)
- Rotation

The backrest hardware is also width adjustable, allowing the backrest to be fitted to wheelchairs that are up to 25 mm narrower or wider than the actual backrest width – an ideal feature for those with a wider back and narrower hips, or a narrow back and wider hips.

All of these adjustment possibilities ensure a precise fit and positioning in every rigid or foldable frame wheelchair with a backrest tube diameter of 19 mm, 22 mm and 25 mm.



##### Fixed mount

Constructed with a carbon fiber plate to reduce overall weight.

##### Quick release

Easy to remove for portability.



## Features and options

### Privacy flap

An optional privacy flap which covers the opening between the seat and back.



### Positioning Pad

A lumbar pad is included as standard, providing lower back support for those who need additional comfort.

### MX2 Deep Laterals

Provide extra mid-line support and stability - 85mm of extra deep contour to the standard backrest contour.  
Pad 140 mm H x 76 mm L

## Technical data

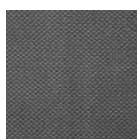
For more comprehensive pre-sales information about this product, including the product's user manual, please see your local Invacare website.

|            | Width                      | Height                | Angle adjustment | Depth adjustment                          | Total product weight                                  | Cover cleaning temperature | Max. user weight | Limited warranty |
|------------|----------------------------|-----------------------|------------------|---|---|----------------------------|------------------|------------------|
| Matrix MX2 | 355, 380, 405, 430, 455 mm | 150, 230, 310, 410 mm | +/- 15°          | 76 mm <sup>1</sup><br>108 mm <sup>2</sup> | starting 770 gr and up (with fixed hardware included) | 60°                        | 113 kg           | 2 years          |

1. With Fixed Hardware
2. With Quick Release Hardware

## Colour

Mesh Tex fabric



Tel: +44 61 487 70 70  
hqeurope@invacare.com  
www.invacare.eu.com

Invacare International GmbH  
Neuhofweg 51  
4147 Aesch BL  
Switzerland



Yes, you can.®