



Invacare[®] | **Matrix[®] Flo-tech[™] Plus**

Deep contoured large cushion with gel sac

matrix[®]
SEATING SERIES

Trusted Solutions,
Passionate People



The *Invacare **Matrx Flo-tech Plus*** cushion incorporates a fluid sac integrated in the cushion seat well. The positioning of the fluid sac targets the ischial tuberosities, helping to significantly reduce pressure in this vulnerable area. This delivers superior levels of protection for those patients identified as being at High Risk of developing pressure ulcers.

Features and Options



Ingress Resistant Cover

Cover is two-way stretch, water-resistant and vapour-permeable. Cover features an anti-slip base with carry handle.



Available in 80 sizes

The *Invacare **Matrx Flo-tech Plus*** is available in a range of 80 sizes, from 360 x 330 to 600 x 550 mm. (See size chart for details).



Integral Sag Compensator option

Option to compensate the sag in wheelchair seats, to ensure the cushion is correctly presented.



Ultra-fresh™ added to all cushions for antimicrobial and odour protection

Antimicrobial treatment has been added to all ***Flo-tech*** foam to help make it resistant to the growth of odour causing bacteria. Helps provide longer lasting freshness.

Contoured seating surface

Offers improved stability and postural support. Also delivers a greater degree of pressure distribution compared to that of a flat surface. The castellations of the cushion allow slight movement which in turn reduces shear and friction forces. The deeper moulded foam offers greater protection to those who are considered clinically obese, or users who would benefit from a higher sitting position.

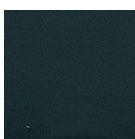
Technical data

For more comprehensive pre-sales information about this product, including the product's user manual, please see the [Invacare website](#).

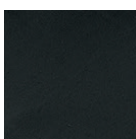
	Various sizes	Height	Total product weight	Max. user weight ¹	Max. cleaning temperature	Warranty	
							Manufactured to European Standards: BS EN 1021-1 Cig, BS EN 1021-2 Match and BS 7176 (Crib 5)
Matrx Flo-tech Plus	A range of 80 sizes	103 mm	2.5 kg	152 kg (24 stone) 191 kg on sizes 560 x 560 mm, 560 x 610 mm (30 stone)	80°	3 years	Disclaimer 1. Guide maximum user weight limits are set assuming that the cushion selected is of appropriate width and depth for the intended user/s.

Colours

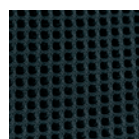
Black Smooth



Black wipedown



Black spacer fabric



Baltic Blue



Tel: +44 1 656 776 222
Fax: +44 1656 776 220
E-mail: uk@invacare.com
Sales Order E-mail: ordersuk@invacare.com
www.invacare.co.uk

Invacare Limited
Pencoed Technology Park
Pencoed - Bridgend CF35
5AQ - United Kingdom

Tel. +353 1 8107084
Fax +353 1 8107085
Email: ireland@invacare.com
www.invacare.ie

Invacare Ireland Ltd
Unit 5 - Seatown
Business Campus
Seatown Road
SWORDS - County
Dublin - Ireland



Yes, you can.®

