



*Invacare*<sup>®</sup> | **Matrix<sup>®</sup> Flo-tech<sup>™</sup> Image**

Slimline moulded foam cushion with fluid sac

**matrix**<sup>®</sup>  
SEATING SERIES

Trusted Solutions,  
Passionate People

**INVACARE**  
Yes, you can.<sup>®</sup>

The *Invacare Matrix Flo-tech Image* cushion uses a combination of a slim, shaped foam cushion base and a fluid sac covering the sacral area, increasing pressure distribution and immersion of the ischial tuberosities. This design delivers a high degree of protection for people who are at High Risk of developing pressure ulcers. This slim cushion format is ideal for both chair and wheelchair use.

## Features and Options



### Ingress Resistant Cover

Cover is two-way stretch, water-resistant and vapour-permeable. Cover features an anti-slip base with carry handle for easy transportation.

### Available in 23 sizes

The *Invacare Matrix Flo-tech Image* is available in a range of 23 sizes, from 360 x 330 to 460 x 410 mm. (See size chart for details).

### Integral Sag Compensator option

Option to compensate the sag in wheelchair seats, and ensure the cushion is correctly presented.

### Ultra-fresh™ added to all cushions for antimicrobial and odour protection

Antimicrobial treatment has been added to all *Flo-tech* foam to help make it resistant to the growth of odour causing bacteria and helps provide longer lasting freshness.

### Slimline contoured foam and gel combination cushion







Some individuals prefer a slimline cushion, finding it more convenient with their daily living activities. The *Invacare Matrix Flo-tech Image* combines the benefit of a contoured foam upper surface with a large fluid sac covering the ischial and sacral area, offering increased support and reducing the peak pressures.

### Contoured seating surface with gel sac

Offers improved stability and postural support; moulded foam castellations and fluid combine effectively to reduce shear and friction forces on tissue.

## Technical data

For more comprehensive pre-sales information about this product, including the product's user manual, please see the [Invacare website](#).

Various sizes	Height	Total product weight	Max. user weight <sup>1</sup>	Max. cleaning temperature	Warranty
					
A range of 50 sizes	78 mm	1.82 kg	140 kg (22 stone)	80°	3 years

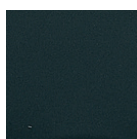
Manufactured to European Standards:  
BS EN 1021-1 Cig, BS EN 1021-2 Match and BS 7176 (Crib 5)

#### Disclaimer

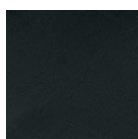
1. Guide maximum user weight limits are set assuming that the cushion selected is of appropriate width and depth for the intended user/s.

## Colours

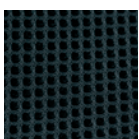
Black Smooth



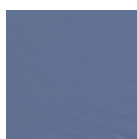
Black wipedown



Black spacer fabric



Baltic Blue



Tel: +44 1 656 776 222  
Fax: +44 1656 776 220  
E-mail: [uk@invacare.com](mailto:uk@invacare.com)  
Sales Order E-mail:  
[ordersuk@invacare.com](mailto:ordersuk@invacare.com)  
[www.invacare.co.uk](http://www.invacare.co.uk)

Invacare Limited  
Pencoed Technology Park  
Pencoed - Bridgend CF35  
5AQ - United Kingdom

Tel. +353 1 8107084  
Fax +353 1 8107085  
Email: [ireland@invacare.com](mailto:ireland@invacare.com)  
[www.invacare.ie](http://www.invacare.ie)

Invacare Ireland Ltd  
Unit 5 - Seatown  
Business Campus  
Seatown Road  
SWORDS - County  
Dublin - Ireland



Yes, you can.®